

COLLECTION '25



CURVE 3D

S U R F A C E

NEXT GENERATION TEXTURE

About Collection



Redefining the Art Of Depth, Design and Precision

we believe surfaces should be experienced, not just seen. That's why we created the **"Curve 3D"** Surface which is a breakthrough in texture, pattern and visual harmony. With seamless digital synchronization, every curve and contour flows perfectly, creating a stunning sense of depth and realism. It's more than a surface; it's an immersive design experience that sets a new benchmark for precision and beauty.



CURVE 3D

S U R F A C E

NEXT GENERATION TEXTURE

"Craftsmanship
is in the details
and details are
everything."

**Hyper-realistic 3D
depth** for
unmatched visual
precision.

About Details

3D Depth with Seamless Pattern Precision

The **Curve 3D Surface** is a triumph of advanced surface innovation, offering unprecedented realism in depth, pattern, and texture. Every detail is seamlessly arranged through cutting-edge digital synchronization, ensuring flawless alignment across the entire surface. The gentle undulating patterns create a captivating play of light and shadow, bringing spaces to life with a tactile richness you can see and feel. This exceptional design precision is achieved through the dedication of our highly skilled R&D team, making every slab a perfect blend of artistry and technology. Curve 3D Surface sets a new benchmark for immersive texture, visual harmony, and enduring elegance.



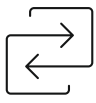
Grand Scale with the Mastery of Advanced 3D Surface Design

The **Curve 3D Surface** is a celebration of cutting-edge craftsmanship, bringing unprecedented depth, texture, and pattern precision to every slab. Through seamless digital synchronization, each design flows flawlessly, creating an engaging play of light and shadow. Its intricate detailing and lifelike realism transform spaces into immersive experiences while delivering exceptional durability for projects that demand both beauty and strength.

Impeccable Surface Features
for Effortless Performance



Curved 3D Surface Technical Features :



**DIGITALLY
SYNCHRONIZED**

Patterns and textures align seamlessly to create a unified look, enhanced by digitally synchronized punch design for flawless visual flow.



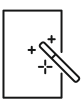
**UNPRECEDENTED
REALISM**

The punch texture delivers unmatched authenticity and realism, with finely sculpted details that evoke the raw beauty and depth of natural stone.



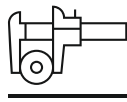
**ANTI
STAIN**

Specifically engineered to minimize any stain, while helping surfaces retain a cleaner appearance.



**UNIQUE
VISUAL EFFECT**

The surface punch creates a unique visual effect with dynamic depth, light play, and captivating design transitions that elevate any space.



**EXCEPTIONAL
DESIGN
PRECISION**

It captures intricate details and sharp patterns, ensuring flawless design clarity and a visually striking surface.



PEI 4

Rated PEI 4 by the Porcelain Enamel Institute, it offers moderate wear resistance, suitable for high traffic region as well.

I N D E X





Wall

Gesso Beige Crossfade

Floor

Crossfade



GESO **BEIGE CROSSFADE** R - 2



Size :
120x180cm

Body Type :
GVT

Thickness :
9mm



CURVE 3D
SURFACE



Wall

Gesso Bianco Tangle

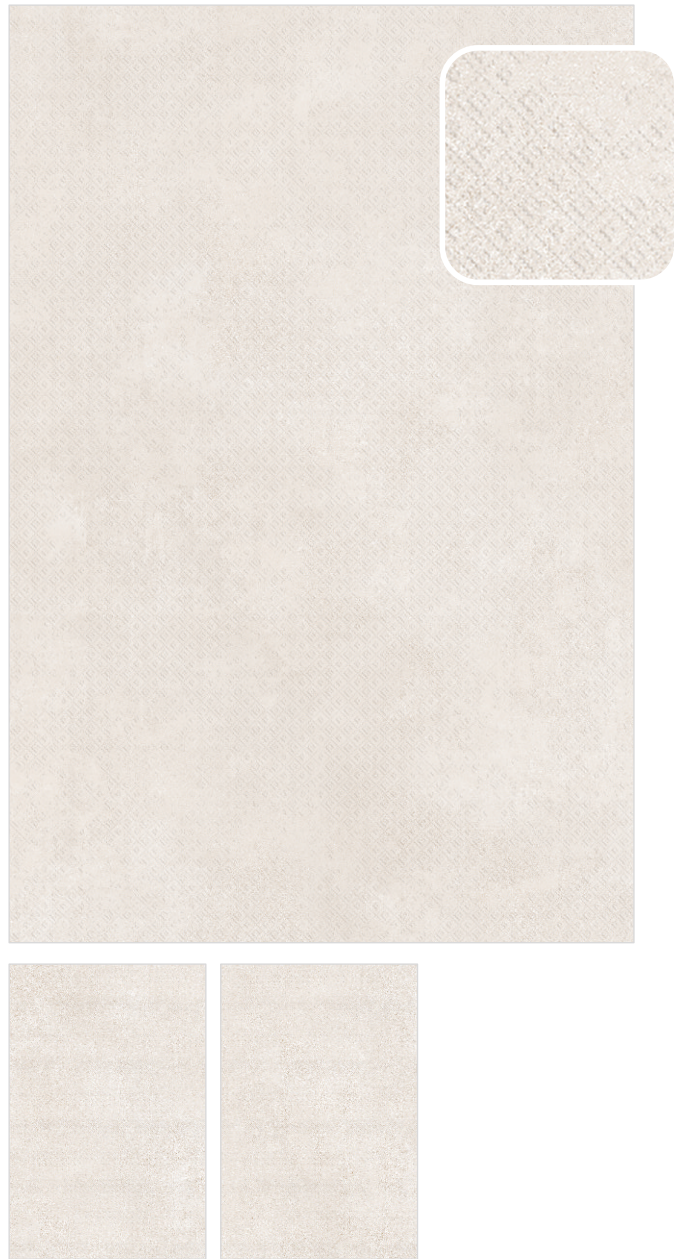
Floor

Hazestone Tortora



GESSO **BIANCO TANGLE**

R - 2



Size :
120x180cm

Body Type :
GVT

Thickness :
9mm



CURVE 3D
SURFACE



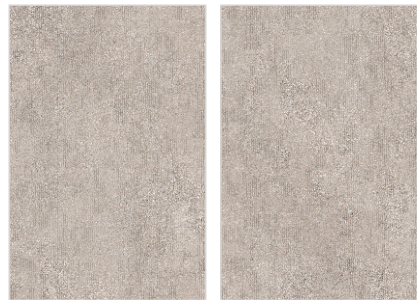
Wall
Gesso Grey Trellis

Floor
Hazestone Crema



GESSO GREY **TRELLIS**

R - 2



Size :
120x180cm

Body Type :
GVT

Thickness :
9mm

CURVE 3D
SURFACE



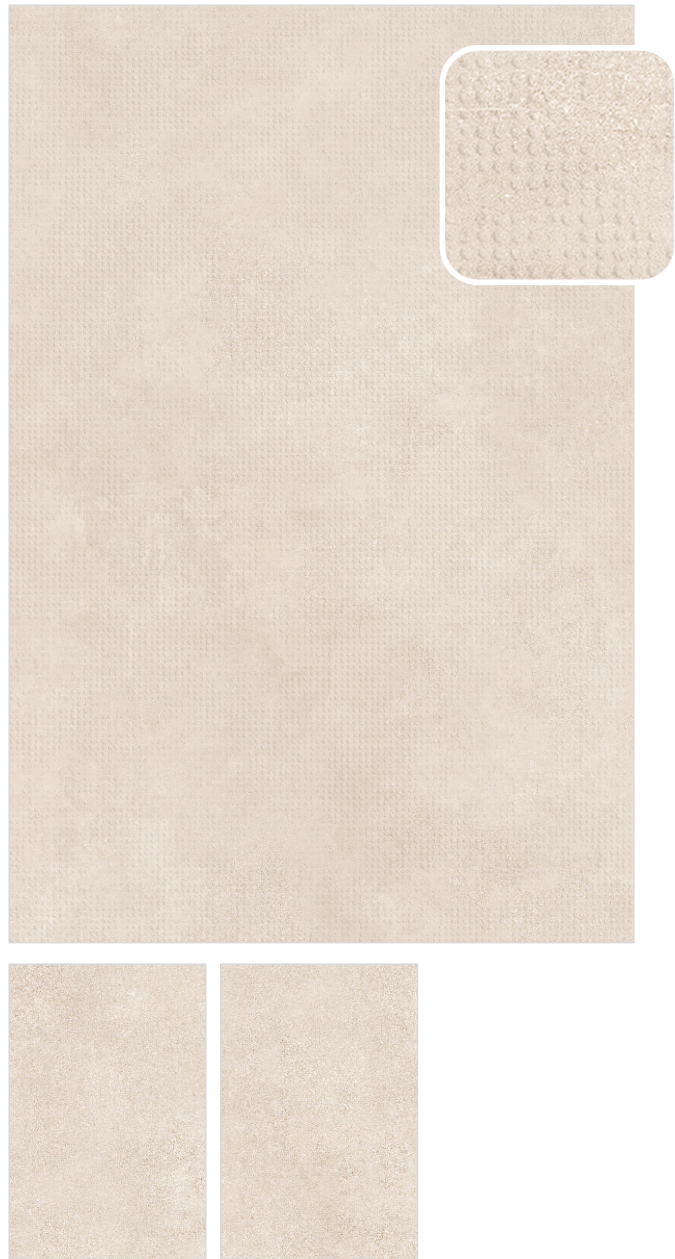
Wall
Gesso Sepia Dots

Floor
Hazestone Tortora



GESO **SEPIA DOTS**

R - 2



Size :
120x180cm

Body Type :
GVT

Thickness :
9mm



CURVE 3D
SURFACE

TECHNICAL SPECIFICATION

CHARACTERISTIC	STANDARD AS PER ISO - 13006/En14411 GROUP B1a	VALUE	TEST METHOD
REGULATORY PROPERTIES			
Deviation in Length & Width	±0.5%	±0.1%	ISO 10545-2:2018
Deviation in Thickness	±5.0%	±2.92%	ISO 10545-2:2018
Straightness in Side	±0.5%	±0.1%	ISO 10545-2:2018
Rectangularity	±0.6%	±0.1%	ISO 10545-2:2018
Surface Flatness	±0.5%	±0.1%	ISO 10545-2:2018
Color Difference	Unaltered	No change	ISO 10545-16:2010
SURFACE MECHANICAL PROPERTIES			
Water absorption	< 0.50%	< 0.06%	ISO 10545-2:2018
Bulk density	> 2.0 g/cc	> 2.34 g/cc	ISO 10545-3:2018
MASSIVE MECHANICAL PROPERTIES			
Modulus of Rupture	Min. 35 N/mm²	Min. 40.41 N/mm²	ISO 10545-4:2019
Breaking Strength	Min. 1300 N	Min. 1887.8 N	ISO 10545-4:2019
Impact Resistance (COR)	As per mfg	0.84	ISO 10545-5:2021
SURFACE MECHANICAL PROPERTIES			
Surface Abrasion Resistance	As per mfg	Class-3 (1500 Cycle Pass)	ISO 10545-7:1996
Scratch Hardness of Surface (Moh's Scale)	As per mfg	Class-5	IS 13630-13:2019
THERMO HYDROMETRIC PROPERTIES			
Frost Resistance	No Damage	No Damage	ISO 10545-12:1995
Thermal Shock Resistance	No Damage	No Damage	ISO 10545-9:2013
Moisture Expansion	Nil	Nil	ISO 10545-10:2021
Linear Thermal Expansion (COE)	Max. 9.0x10 ⁻⁶ K ⁻¹	Max. 3.15x10 ⁻⁶ K ⁻¹	ISO 10545-8:2014
Crazing Resistance	As per mfg.	No Damage	ISO 10545-11:1994
CHEMICAL PROPERTIES			
Resistance to Staining	Min. Class-3	Min. Class-5	ISO 10545-14:2015
House Hold Chemical Resistance and Swimming Pool Salt	To be reported	GLA-GHA (No Visible Effect)	ISO 10545-13:2016
Resistance to High and Low Concentration of Acid and Alkali	Minimum Class-B	GA	ISO 10545-13:2016
SAFETY PROPERTIES			
Slip Resistance	As per mfg.	> 0.40	ISO-10545-17
Fire Resistance	As per mfg.	Fireproof	N.A.
Lead & Cadmium Releas	As per mfg.	0.004mg/dm ³	ISO 10545-15:2021

PACKAGING DETAILS

SIZE	PCS./BOX	AREA/BOX (SQ.MTR.)	AREA/BOX (SQ.FT.)
1200x1800mm	2 Pcs.	4.32 Sq. Mtr.	46.5 Sq. Ft.

